



Steel Posts

Declaration of Conformity

In accordance with EN 128991:2007

We Righton Blackburns Ltd
of Building 38, Second Avenue, The Pensnett Estate, Kingswinford, West Midlands

Date of Issue: 04 January 2017

This certificate covers all purchase orders and all deliveries.

Posts are manufactured to BS EN 12899-1 where specified, with a range of protective finishes including hot dip galvanising to BS EN ISO1461:1999 and PVC coating by fluidised bed method, or a combination of both.

All Steel Lighting Columns and Traffic Sign Posts are manufactured from steel to grade EN 10219 S275 or S355.

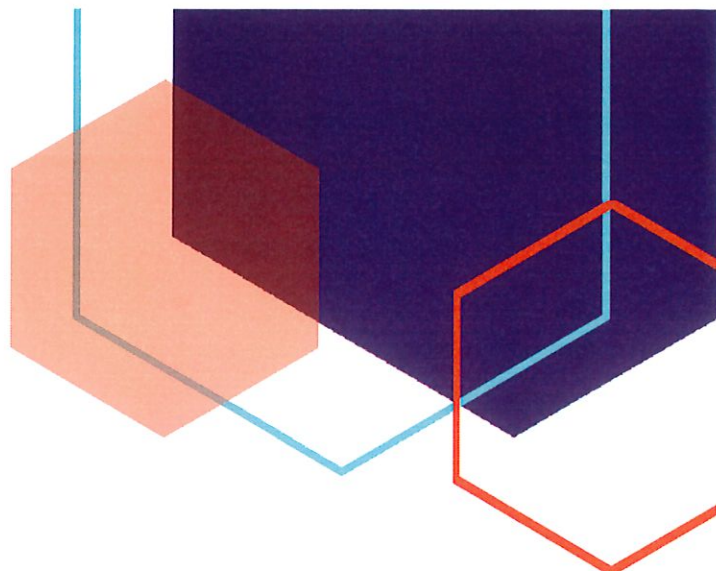
On behalf of Righton Blackburns Limited

Signed by:

Alan Vigar
National Business Development Director

Revision 1 22/01/2019 JG

Righton Blackburns Limited
Building 38, The Pensnett Estate, Second Avenue, Kingswinford, West Midlands DY6 7UN
T: 01384 276400 E: centre@rblimited.co.uk
www.rightonblackburns.co.uk



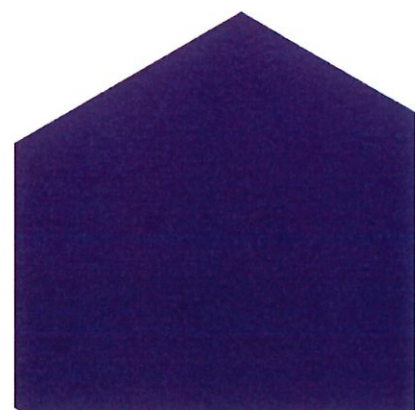
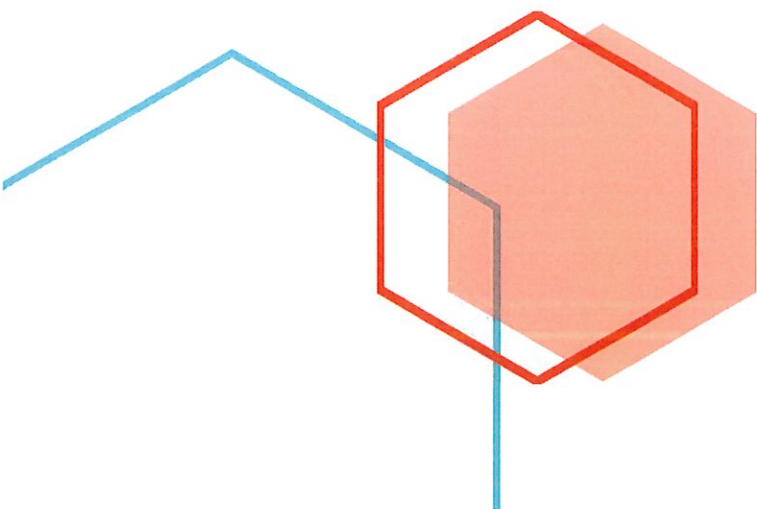
Blackburns Metals Declaration of Performance

Steel Tubes used in Construction

With reference to their use as Traffic Sign Posts

This document verifies that Steel Posts supplied by Blackburns Metals conform to the standards that regulate the use of Steel Tubes in the construction of Traffic Signs to EN 12899-1:2007

Supplying Steel Tubes conforming to BS EN 10219-1:2006 and conforming to CE Marking requirements CPR 305/2011.





Declaration of Performance

Steel Tubes

Specifications

The Standard normally specified for the use of Steel Tubes for the purpose of supporting Traffic Signs is: BS EN 10219-1:2006
The steel grades commonly specified are s 275 or s 355
We supply s 275 JR as a minimum requirement.

CE Marking

CE marking has become compulsory for Sign Manufacturers when installing Traffic Signs on European Highways.

The component of the Traffic Sign that acts as the support IE the Steel Post also has to be CE marked by the Manufacturer of the Steel Post, IE the Steel Mill. (Please note a physical mark on the post is not a requirement although the complete Sign, produced by the Sign Manufacturer should be labelled as a CE marked product (when the requirement exists).

The Standard

The Standard that Traffic Sign Manufacturers work to, is EN 12899-1 for all fixed vertical road traffic signs that are placed on to the market, (which applies to any road to which the public has access).

Steel Tubes are supplied to act as supporting structural posts, we supply BS EN 10219-1:2006 s 275 JR as a minimum requirement.

Product Choice

Before placing on to the market the Traffic Sign Manufacturer should ensure that the Steel Post used is suitable for the location where it is placed. Local conditions to consider are ground type, and elevation. Computer programs are available such as "Sign Load" provided by Buchanan Computing which will advise what Posts should be used for a specific sign size and a specific location.

Blackburns Metals



Blackburns Metals have for many years been the leading distributor of the widest range of products to the Traffic Sign Manufacturing Industry.

Blackburns Metals pride themselves as being the leader in innovation and the development of new products and solutions for the Traffic Sign Industry.

Safety is paramount in the Traffic Sign Industry. We ensure that all of the products we supply comply with all relevant regulations.

DOP SIGN POSTS



Posts Supplied by Blackburns Metals

The products that are held in stock (steel posts) by Blackburns Metals are supplied to the Traffic Sign Manufacturing Industry, for the purpose of supporting Traffic Signs,

The Products are available in the following steel specifications.

EN10219

Part 1: Technical delivery conditions

Part 2: Tolerances, dimensions and sectional properties

275 JR as a minimum requirement

JR – Longitudinal Charpy V-notch impacts 27J at Room temp

J0 – Longitudinal Charpy V-notch impacts 27J at 0°C

J2 – Longitudinal Charpy V-notch impacts 27J at -20°C

EN 12767 Approved Passively Products.

Single Steel Tubes used as support posts up or multiplies with appropriate spacing up to and including 88.9 od and 3.2 mm nominal thickness, in grades 235 275 or 355 are deemed to be passively safe. Performance class 100:NE:2

Protected Coatings

We Provide both Protected SP1 and Non Protected SP0 (table 15 EN 12899-1 2007)

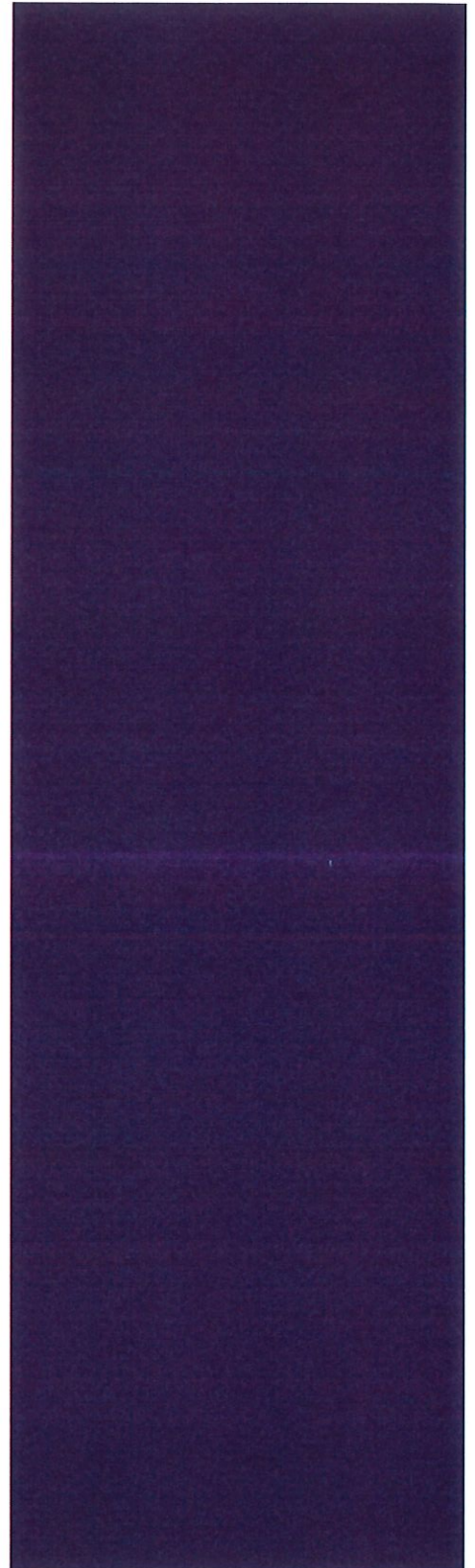
ARTSM

As members of The Association for Road Traffic Safety and Management, we work closely with them and use their Guidance Document WG2/03 issue date September 2013 "CE Marking of Traffic Signs" to ensure we are supplying and advising the Traffic Sign Manufacturing industry correctly.

CPR 305/2011 Construction Products Regulation.

The Construction Products Regulation (CPR) has been adopted by the European Commission and the UK Government and replaces the Construction Products Directive (CPD).

It is now mandatory for products which fall under the scope of the regulation to have CE marking.



DOP SIGN POSTS



CRP Delegated Act (EU) no 574/2014 Annex 111

The Steel Posts supplied offer full traceability by all manufactures used by Blackburns Metals The individual DoP as issued by the producing mill can be supplied along with a copy of an original mill certificate upon request.

AVCP System 1.

All products supplied have certification available upon request. The certificates will show that the certificated material will be comprising by means of issuing a certificate showing of constancy of performance with determination of the product-type. The certificate will prove continuous surveillance and audit testing by a notified product certification body system.

QMS.

Our Management System Certificate Issued by DNV-GL
Certificate NO: 39706-2008-AQ-GBR-UKAS

Initial issue date: 19/10/1993
Current validation 17/04/2018-19/10/20

Management System Standard:

ISO 9001:2015

CPR.

Management System Certification
System type single
Accreditation body CEO 120 **SGS**
Scope of Certification EN 12899-1:2007 Supports supplied for fixed vertical road traffic signs to table ZA.3.

Certificate of Constancy of Performance GB14/92011

Certificate first issued 01/10/14

Current certificate issue date 01/10/17 valid until 01/10/2020

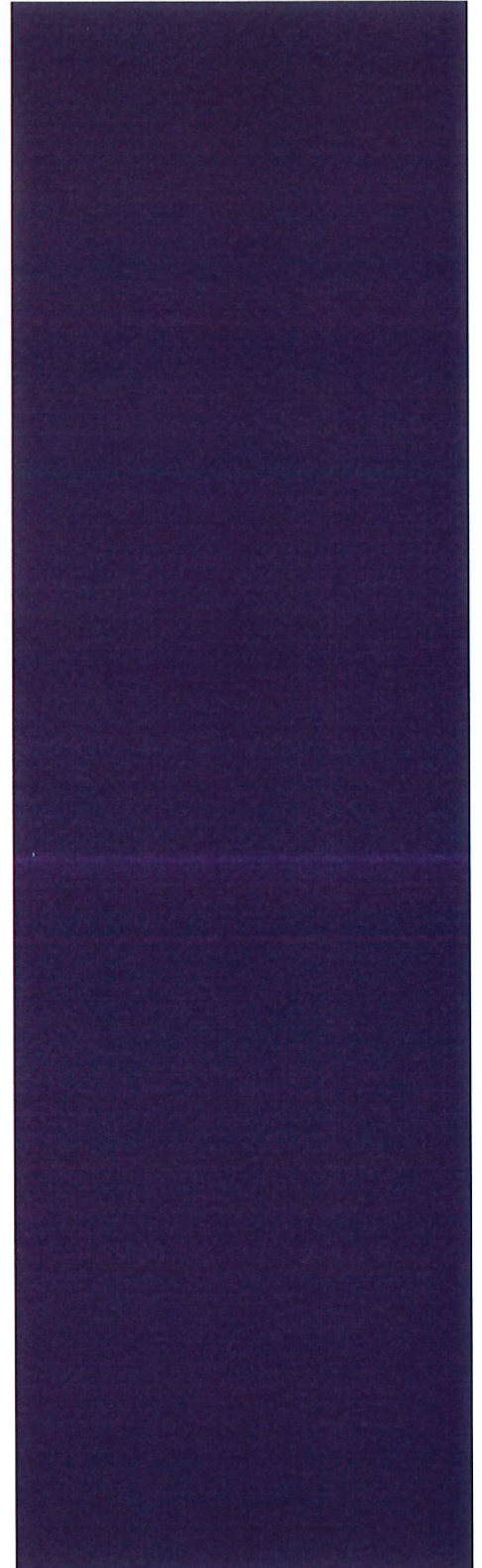
Audit date 11/07/2018

Next planned Audit 11/07/2019

Re Certification audit due before 18/07/2020.

Declaration of Performance.

As stated all posts supplied by Blackburns Metals, ordered to the specifications referred to, will meet the requirements of the Traffic Sign Post Standards when the Sign is manufactured and installed to the correct specification and standards.



DOP SIGN POSTS



Size Choice.

Standard Sizes == available from stock X (additional bespoke sizes available upon request).

	3.0	3.6	4.0	5.0	6.0
48.3	X				
60.3	X				
76.2	X	x		x	
88.9	X	x	x	x	
114.3		x		x	
139.7		x		x	
168.3				x	x
193.7					x
219.1					x

As stated all posts supplied by Blackburns Metals, ordered to the specifications referred to, will meet the requirements of the Traffic Sign Post Standards when the Sign is manufactured and installed to the correct specification and standards.

Issue date 17/09/2018 our ref SRGM DOP v 6

Blackburns Metals

Building 38 Second Avenue

The Pensnett Estate

Kingswinford

West Midlands

DY6 7UN