

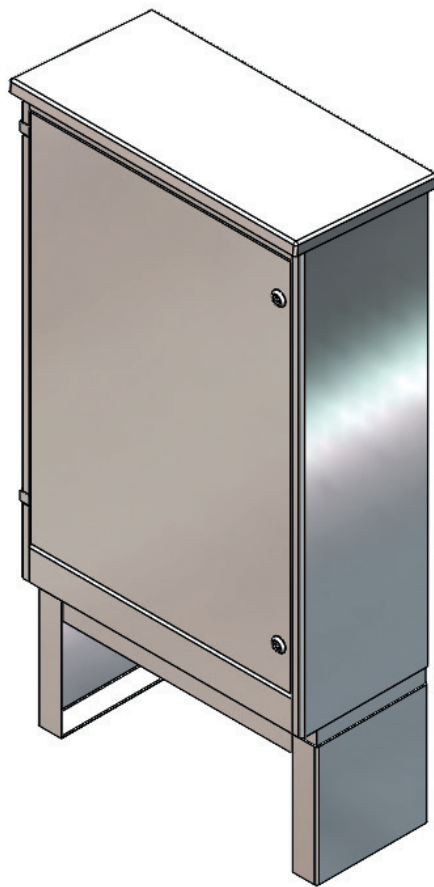


Electrical Enclosure

E2 510 (hinged door)

Main Features:

- Galvanised finish to BS EN ISO 1461
- Vandal resistant
- Hinged door
- Fabricated from 3mm mild sheet steel
- Tri-cam locks supplied as standard
- Vandal resistant
- Flush fitting doors
- Fabricated from 3mm mild steel
- Variety of locking mechanisms
- Plinth mounted or surface / wall mounting available
- Radiused corners eliminates sharp edges
- Fully lined door aperture
- IP65 Rated door seal with IP42 ventilator
- Hot dipped galvanised finish to BS EN ISO 1461



Height (above ground)	920mm
Width	612mm
Depth	280mm
Backboard Height	770mm
Backboard Width	560mm
Working Depth	210mm

