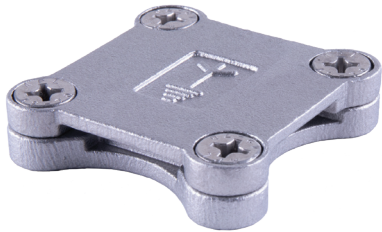
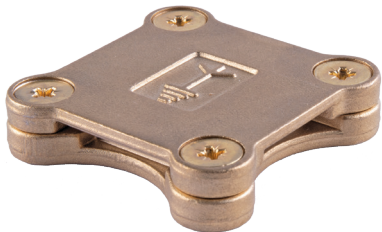


Square Clamps (Flat conductor)



SQCAF253



SQCCF253

BS62305 hot stamped design - NEW

Square Clamps are designed for a four way connection and are suitable for crossing over tapes, straight through joints or 'T' connections to form a continuous network of tapes.

Countersunk hole in the base for fixing the clamp in place.


CONDUCTOR SIZE (mm)	CONDUCTOR MATERIAL	WEIGHT (kg)	PART NO.
25 x 3	Aluminium	0.05	SQCAF253
25 x 3	Copper	0.15	SQCCF253
25 x 6	Copper	0.19	SQCCF256
31 x 3	Copper	0.22	SQCCF313
31 x 6	Copper	0.22	SQCCF316
40 x 6	Copper	0.79	SQCCF406
50 x 6	Copper	0.35	SQCCF506

Material: Aluminium/Copper Alloy


Standard: BS:EN 62561-1, Class H

Tightening Torque: 6Nm

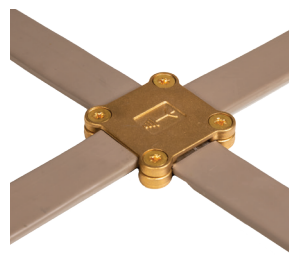
NEW hot stamped design (part numbers in red) coming soon



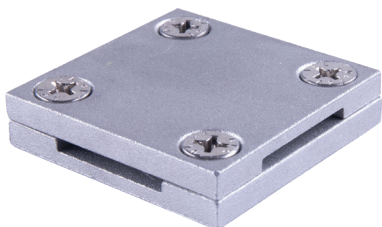
FIXINGS
 1 x CSK 1½ x No.10 woodscrew (BCSW1.5-10 brass for copper/A2CSKSLT1.5-10 stainless steel for aluminium) + plug (PP10) not included



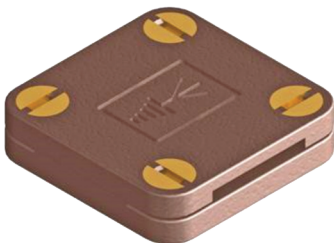
SEE PAGE FIT:20



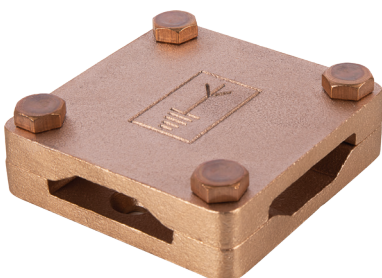
Kingsmill **Square Clamps** permit neat joints on PVC covered conductors due to the recessed lid.



SQCA253



SQCC253



SQCC506


Earthing Range

CONDUCTOR SIZE (mm)	CONDUCTOR MATERIAL	WEIGHT (kg)	PART NO.
25 x 3	Aluminium	0.08	SQCA253
25 x 3	Copper	0.23	SQCC253
25 x 6	Copper	0.44	SQCC256
31 x 3	Copper	0.30	SQCC313
31 x 6	Copper	0.22	SQCC316
40 x 6	Copper	0.79	SQCC406
50 x 6	Copper	1.00	SQCC506


Material: Aluminium/High Copper Content Alloy/Gunmetal

Standard: BS:EN 62561-1, Class H

Tightening Torque: 6Nm



FIXINGS
 1 x CSK 1½ x No.10 woodscrew (BCSW1.5-10 brass for copper/A2CSKSLT1.5-10 stainless steel for aluminium) + plug (PP10) not included



SEE PAGE FIT:20