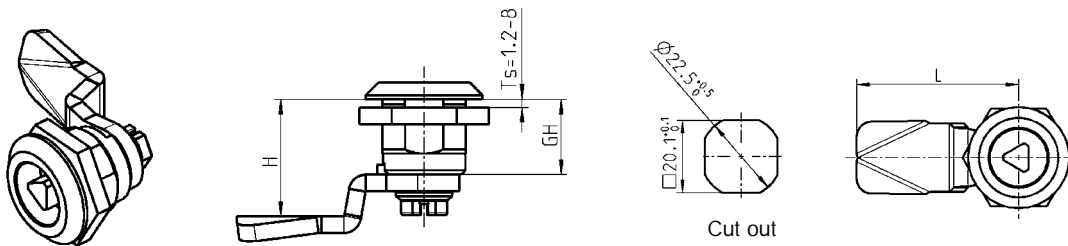


Quarter turn; Housing GH = 18 and 30 - 60; Insert; Seal

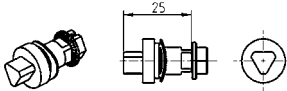
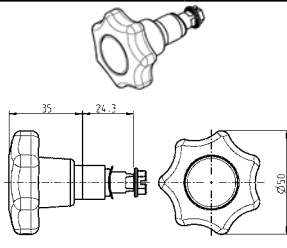
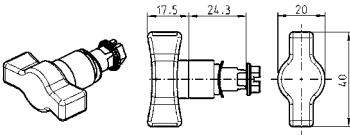
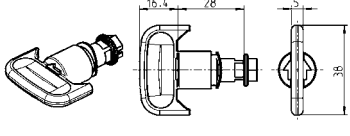
PROGRAM 1000

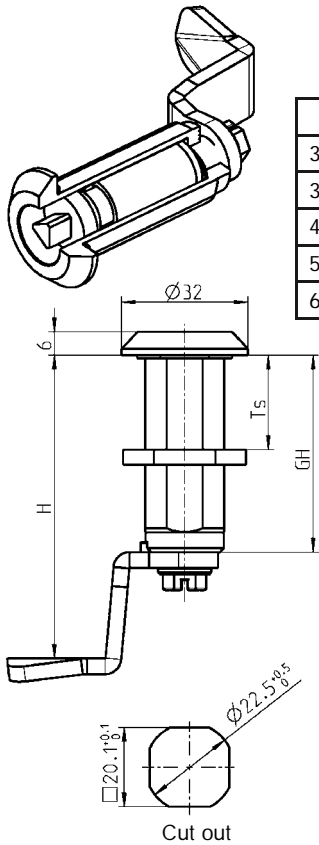


Housing with nut or earthnut m.s.zinc plated

Head diameter	Ø28		Ø30		Ø32		Ø28	
	Nut	Earthnut	Nut	Earthnut	Nut	Earthnut	Nut	Earthnut
GH = 18 mm	4	4	4	4	6	6	4	4
Head height								
Zinc die chrome plated	1000-U45	1000-U56	1000-U47	1000-U55	1000-U7	1000-U54	1000-U330	1000-U332
Zinc die chrome plated (with foamed seal)	1000-U45-G	1000-U56-G	1000-U47-G	1000-U55-G	1000-U7-G	1000-U54-G	-	-
Zinc die black powder coated	1000-U223	1000-U224	1000-U221	1000-U222	1000-U219	1000-U220	1000-U331	1000-U333
Zinc die black powder coated (with foamed seal)	1000-U223-G	1000-U224-G	1000-U221-G	1000-U222-G	1000-U219-G	1000-U220-G	-	-
Polyamide GF V0 black	1000-U155	-	-	-	1000-U46	-	-	-
Polyamide GF V0 black (with foamed seal)	1000-U155-G	-	-	-	on request	-	-	-
Stainless steel AISI 303 (with foamed seal)	1000-U134	-	-	-	-	-	-	-
Stainless steel AISI 316 (with foamed seal)	1000-U530	-	-	-	-	-	-	-

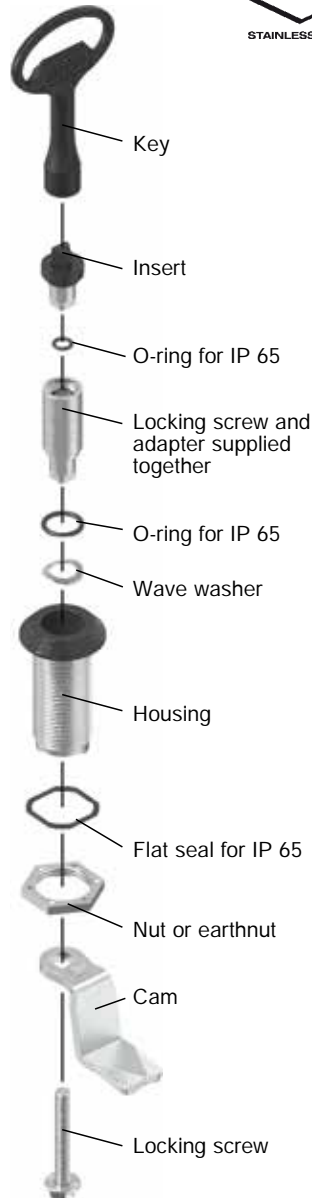
Insert zinc die, polyamide or stainless steel; Fixing material m.s. zinc plated or stainless steel; with seal (only for stainless steel version)

	Zinc die chrome plated	Zinc die black	Polyamide 66 GF 50 black	Stainless steel AISI 303	Stainl.steel AISI 316
 Insert	1000-U17	1000-U322	-	1000-U351	-
	1000-U1	1000-U323	1000-U184-N	1000-U135	1000-U531
	1000-U2	1000-U324	1000-U185-N	1000-U136	1000-U532
	1000-U18	-	-	1000-U352	-
	1000-U197	-	-	-	-
 Star handle	1000-U3	1000-U325	-	1000-U334	1000-U536
	1000-U4	1000-U326	1000-U186-N	1000-U335	1000-U537
	1000-U194	-	-	-	-
	1000-U249	-	-	-	-
	1000-U5	1000-U327	1000-U187-N	1000-U183	1000-U533
	1000-U6	1000-U328	1000-U188-N	1000-U137	1000-U534
	1000-U96	-	-	-	-
	1000-U168	-	-	-	-
	1000-U182	-	-	-	-
	1000-U169	-	-	-	-
 Wing knob ①	1000-U20	-	-	-	-
	1000-U195	-	-	-	-
	1000-U142	1000-U329	1000-U196-N	1000-U630	1000-U631
	1000-U738	1000-U739	-	-	-
	1000-U336	-	-	-	-
	1000-U509	-	-	1000-U729	-
	1000-U757	-	-	1000-U757-01	-
 Wing knob ②		Zinc die black powder-coated	Polyamide GF / Zinc die black	Polyamide GF black / AISI 303	
	-	-	1000-U13	1000-U138	-
	-	-	1000-U78	1000-U510	-
	-	1000-U910	-	-	-



GH	Ts
30 mm	1.5 up to 20 mm
36 mm	1.5 up to 26 mm
40 mm	1.5 up to 30 mm
50 mm	1.5 up to 40 mm
60 mm	1.5 up to 50 mm

Assembling instruction



IP 65 with:	
** Flat seal	1000-23
** O-ring	1000-24
IP 66 with:	
Seal-set	1000-U769
IP 69K with:	
* Seal set	1000-U841
Assembly on request:	
without O-ring	1000-990
with O-ring	1000-991

Housing material on choice; nut or earthnut m.s. zinc plated or nut stainless steel
Adapter zinc die or AISI 303, screw m.s. zinc pl. or stainless steel

GH in mm	Zinc die chrome plated		Zinc die black powder coated		Polyamide black Nut	AISI 316 / 303 Nut
	Nut	Earthnut	Nut	Earthnut		
30	1000-U51	1000-U65	1000-U225	1000-U226	1000-U876	1000-U878
- adapter			1000-U164			1000-U879
36	1000-U246	1000-U248	1000-U317	1000-U318	-	-
- adapter			1000-U198			-
40	1000-U66	1000-U67	1000-U227	1000-U228	1000-U737	-
- adapter			1000-U165			-
50	1000-U68	1000-U69	1000-U229	1000-U230	1000-U736	-
- adapter			1000-U166			-
60	1000-U504	1000-U505	1000-U506	1000-U507	-	-
- adapter			1000-U535			-

** included in case of stainless st. version

* Seal-set only complete assembled with housing, insert and cam available

Note:
Quarter turn assembling 1B-105

Further parts see page
- Housing 1B-760
1B-680
1B-820

- Quarter turn with stepped cam 1B-240
- cam with catch 1C-120
up to 1C-180
- Accessories from 1C-170
- Insert with wing knob 1B-720
- Escutcheon 3B-140
- Door lock prominent 12A-220
- Key 12B-120